



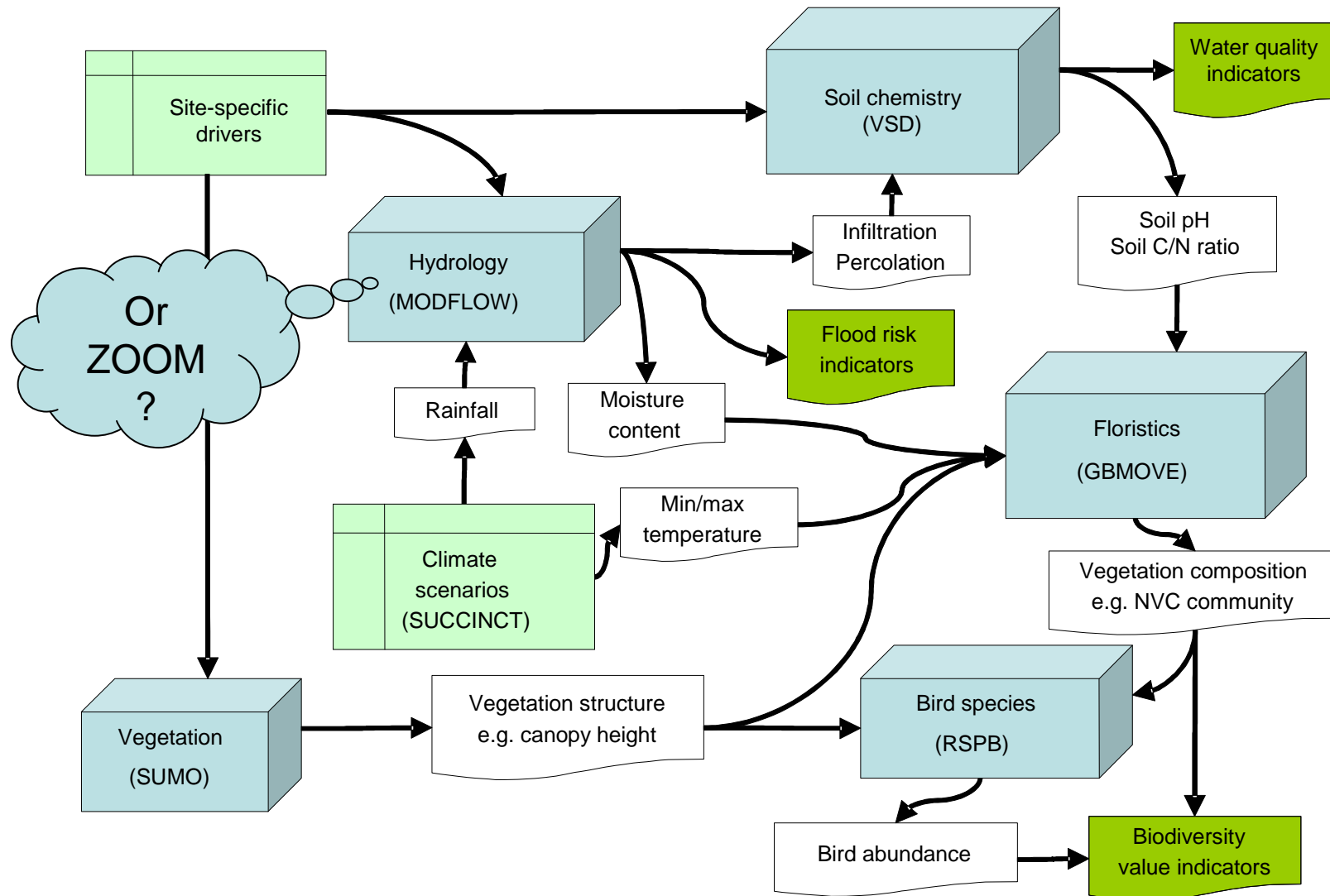
Predicting drought impacts on ecosystem services

Ed Rowe

Aim

- To explore the benefits for CEH science of:
 - model integration
 - the OpenMI
- By:
 - linking biogeochemical and niche models to predict drought impacts on a range of ecosystem services

Models to be linked



Deliverables

- **Tested approach to linking CEH programmes.**
- Documented, climate-change-ready model of effects of drought on ecosystem services.
- **Proofs-of-concept for model linking in CEH.**
- **Component models made OpenMI-compliant and available for use in other model chains.**
- Multiple publications in high impact journals.
- Presentations at national and international scientific conferences.
- **Report for policymakers with land-management recommendations for maximising delivery of ecosystem services.**

Investigators

- **PI:**
 - Ed Rowe (CEH Bangor)
- **Co-Investigators:**
 - Roger Moore (CEH Wallingford)
 - James Blake
 - Mike Acerman
 - Bridget Emmett (CEH Bangor)
 - Chris Evans
 - James Pearce-Higgins (RSPB)
 - Simon Smart (CEH Lancaster)
 - James Gibbons (Bangor University)
 - Wieger Wamelink (Alterra, NL)
 - A. N. Other (HR, DHI or Deltares.)